



WALL MOUNT

WM101 Series

DECORATIVE WALL MOUNT
Indoor/Outdoor — FL, IND, LED, HID

SERIES

WM101-ADA	ADA WM101 Series [14" sq. x 4" deep]
WM101-15	15" sq. WM101 Series
WM101-18	18" sq. WM101 Series

LAMP TYPE

DBX	Double BiAx Mini-Fluorescent
TBX	Triple BiAx Mini-Fluorescent
ICE	Osram® ICE Induction
QL	QL Induction
MH	Metal Halide
LED	Light Emitting Diode

VOLTAGE

120	120 Volts
277	277 Volts
347	347 Volts
QV	Quad Volt [120/208/240/277]
UNV	120-277 Universal Volt <i>Must Specify Voltage for EM option</i>

BALLAST

EBX	Electronic Ballast
2EBX	Two Electronic Ballasts
EBMH	Electronic Ballast for MH
HPF	High Power Factor for MH

HOUSING

SFSL	Solid Front, Side Light [Standard]
NSL	Solid Front, No Side Light [Optional Downlight Only]
SQ	Optional Front Window: Square Openings [4]
WST	Optional Front Square Window [One]
WCU	Custom Front Window Design

WINDOW FINISH

[Specify *Side Light and **Front Window]

AM	Amber
BL	Blue
CC	Custom Color
GR	Green
RE	Red
OP	White Opal Translucent Acrylic Diffuser
CP	Clear Prismatic Polycarbonate Lens

OPTIONS

CT3	±3000K LED Color Temp
CT4	±4000K LED Color Temp
CT5	±5000K LED Color Temp
DIM	Dimming Ballast <i>*Refer to DIM Table for options</i>
FUS	Fuse and Fuseholder
FUS2	Double Fusing
GN	Generator Transfer Device
H/L	Dual Circuit, High/Low LED Light Level
LEC5*	LED Emergency Circuit [1] Five Watt
LEC10*	LED Emergency Circuit [2] Five Watt
<i>*Must Specify Voltage for incoming EM Circuit [by others] A = 12VDC or B = 120VAC or C = 24VDC or D = 277VAC</i>	
MD	Integral Motion Detector
MDX	External Motion Detector <i>Specify Finish: Bronze or White</i>
OS	Opaque Sides
REM	Remote Emergency Battery <i>self-contained in CA – Must Specify Voltage [120V or 277V]; *Refer to EM Table for options</i>
SU	Surge Protection for LED fixtures
TPD	Tamperproof Screwdriver

FINISH

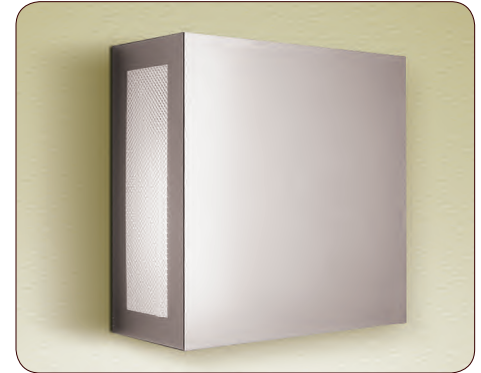
BK	Black
BZ	Bronze — Standard
CC	Custom Color
PA	Painted Aluminum
WHT	White

WM101 LAMPING TABLE

	DBX	TBX	ICE	QL	MH	LED
-ADA	[2]26	[1-2]32 [1]42	N/A	N/A	N/A	20 40
-15	[2]26	[1-2]26 [1-2]32 [1-2]42	N/A	N/A	[1]50 [1]70	20 40
-18	[2]26	[1-2]57 [1]70	[1]70	[1]55 [1]85	[1]70 [1]100	20 40

SPECIFICATIONS

- **BALLAST** — High Power Factor 120 or 277 Volt Electronic Ballast.
- **BACKPLATE** — Heavy ga. aluminum.
- **FINISH** — Pre-treated Oven baked Polyester Powder Coat Finish.
- **HOUSING** — 16 GA Aluminum Housing with Solid Front and Side Windows provide light glow on all four sides. Also available as downlight only. Optional Front Window.
- **HOUSING WINDOW** — Clear Prismatic Acrylic [.125" thick] is Standard on ADA & 18" fixtures Polycarbonate Diffuser is Standard for WM101-15
- **LENS FASTENERS** — Two [2] stainless steel tamperproof screws to secure lens in place
- **LABELS** — **UL/ULC LISTED** Suitable for wet environments.
- **MOUNTING** — Indoor: Center access hole to a "J" box. Outdoor: [4].3125 dia. bolts.



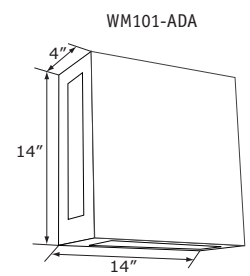
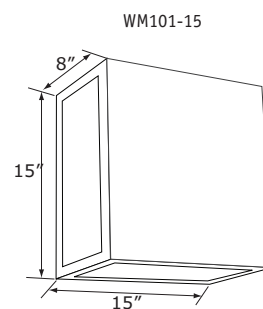
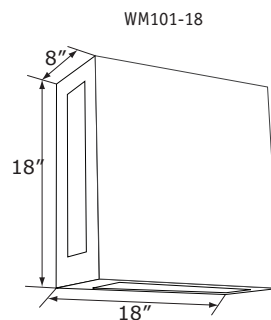
Standard Solid Front / Side Light [SFSL]



Optional Front Window 4 Square Openings [SQ]



Optional Front Square Window [WST]



SUBMITTAL INFORMATION

Project: _____
Location: _____
Catalog No.: _____
Fixture Type: _____