



CEILING MOUNT

CM108 Series

MULTI-PURPOSE CEILING MOUNT
Indoor/Outdoor — FL, IND, LED, HID

SERIES

CM108 Ceiling Mount Series CM108

LAMP TYPE

- TBX Triple Biax Mini-Fluorescent
MH Metal Halide
EMH Elite™ Metal Halide Ceramic Lamp by Philips
IC Circle Induction
ICE Osram® ICE Induction
QL QL Induction
LED Light Emitting Diode

VOLTAGE

- 120 120 Volts
277 277 Volts [Standard for CMH]
347 347 Volts
480 480 Volt
QV Quad Volt [120/208/240/277]
UNV 120~277 Universal Volt
Must Specify Voltage for EM option

BALLAST

- EBX Electronic Ballast/Driver
EBMH Electronic Ballast for MH
HPF High Power Factor for MH
IND Induction HF Generator

FINISH

- BK Black
BZ Bronze
WHT White - Standard

OPTIONS

- C K12 prismatic polycarb. lens .125" thick
D K12 prismatic polycarb. lens .156" thick
J Clear polycarbonate lens .187" thick
K C73 prismatic tempered glass lens .156" thick
ALU Aluminum Housing & Door
CT3 ±3000K LED/QL Color Temp
CT4 ±4000K LED/QL Color Temp
CT5 ±5000K LED/QL Color Temp
DIM Dimming Ballast
*Refer to DIM Table for options
DSS Drop Straight Sides Diffuser
EM Emergency Battery
- Must Specify Voltage [120V or 277V];
*Refer to EM Table for options
FUS Fuse and Fuseholder
GN Generator Transfer Device
H/L Dual Circuit, LED High/Low Light Level
LEC5* LED Emergency Circuit [1] Five Watt
LEC10* LED Emergency Circuit [2] Five Watt

*Must Specify Voltage for incoming EM Circuit [by others]
A = 12V or B = 120V

- QRS Quartz Restrike Relay [120V Only] Lamp by others
SSHD Stainless Steel Housing & Door [Min. Qty Req'd]
SSD Stainless Steel Door [Min. Qty Req'd]
SU Surge Protection for LED fixtures
TMB Trunnion Mount Bracket
WG Wire Guard

CM106 LAMPING TABLE

Table with 7 columns: TBX, MH, EMH, IC, ICE, QL, LED. Rows show lamp counts for various configurations.

SPECIFICATIONS

High performance, compact surface mount luminaire provides sharp cut-off, low glare illumination. Especially suited for coffered ceiling parking garages for flush appearance and unobstructed lighting. High efficiency vertical lamp HID models. Long lamp life Induction and LED model for difficult-to-relamp areas.

• BALLAST — 120 or 277 Volt, [EBX] electronic zero degree start; [HPF] high power factor, [QV] quad volt for HID; [IND] HF induction generator for Induction QL.

• FINISH — Oven baked [WHT] white polyester powder finish.

• GASKETING — Silicone around door frame interior and lens opening protects against dust, moisture and outside contamination.

• HOUSING — Heavy gauge CRS die-formed and seam welded. Optional [ALU] Aluminum.

• LAMP — [TBX] Triple Biax; [MH] Metal Halide and [EMH] Philips Elite™ Ceramic Metal Halide; [QL] or [ICE] or [IC] Circle Induction; [LED] Light Emitting Diode.

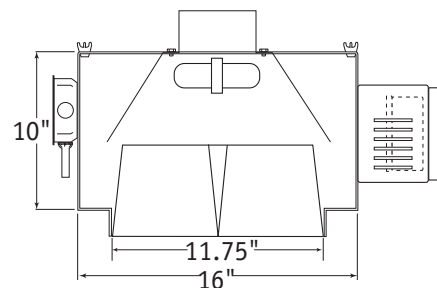
• LENS — .125" thick clear tempered glass lens is standard. See options for others.

• LENS FASTENERS — Heavy gauge aluminum retaining angles that attach through door studs for positive lens clamping.

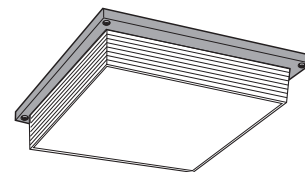
• LABELS — UL/ULC LISTED Suitable For Wet Location.

• MOUNTING — 2 heavy duty aluminum end brackets .125" thick with 2 .4375" dia. holes per bracket. 4 stainless steel bolts per bracket provide positive locked aiming angle for secure adjustment up to 180° rotation of fixture.

• REFLECTOR — .032 specular aluminum for optimum output of light.



Drop Straight Sides [DSS] Option



Wire Guard Option



SUBMITTAL INFORMATION

Project: _____
Location: _____
Catalog No.: _____
Fixture Type: _____